

ATF 110G-5

110 METRISCHE TONNEN TRAGLAST / 110 METRIC TON CAPACITY

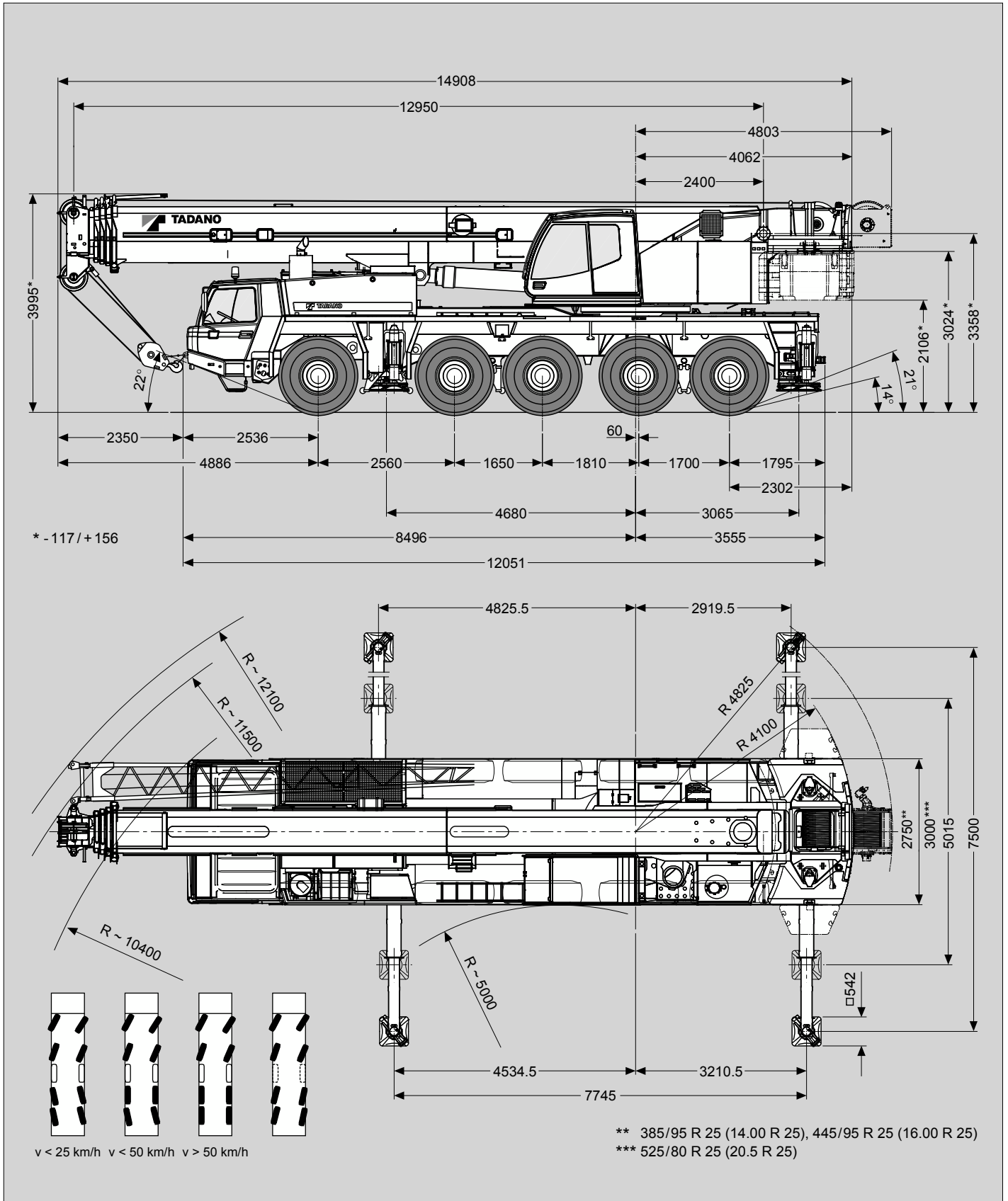
ALL
TERRAIN
CRANE



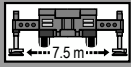
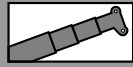
Maße (mm)
 Dimensions (mm)
 Dimensiones (mm)

 445/95 R 25
 (16.00 R 25)

DIN/ISO/EN

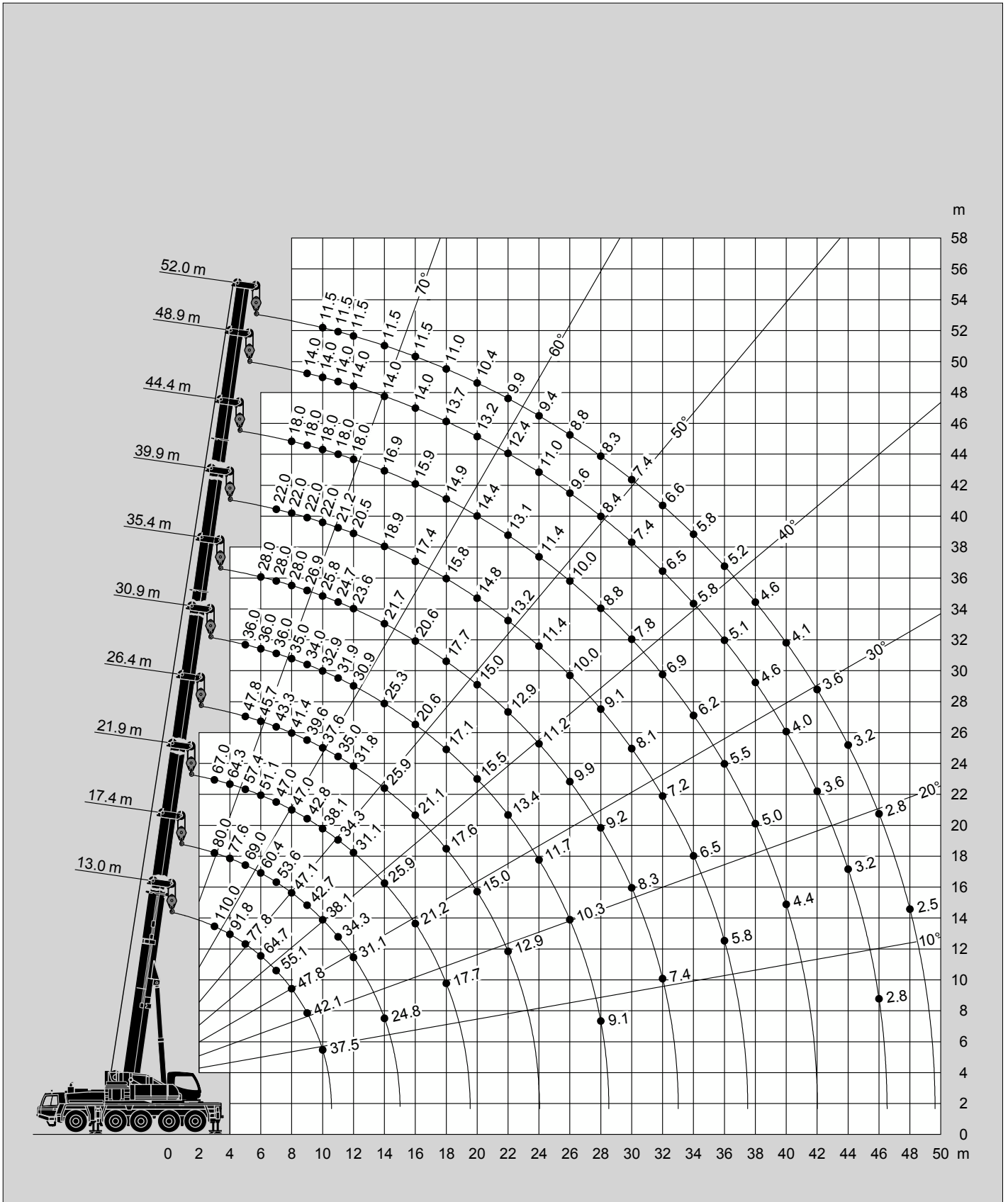


Hubhöhen
Lifting heights
Hauteurs de levage
Alturas de elevación



35t

DIN/ISO/EN

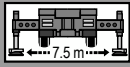
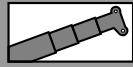




→ m	13.0 m*	13.0 m	17.4 m	21.9 m	26.4 m	30.9 m	35.4 m	39.9 m	44.4 m	48.9 m	52.0 m
3.0	110.0	95.0	80.0	67.0							
3.5	98.9	87.2	80.0	65.6							
4.0	91.8	80.4	77.6	64.3	50.0						
4.5	86.0	74.6	74.1	60.9	48.9						
5.0	77.8	69.5	69.0	57.4	47.8	36.0					
6.0	64.7	61.0	60.4	51.1	45.7	36.0	28.0				
7.0	55.1	54.2	53.6	47.0	43.3	36.0	28.0	22.0			
8.0	47.8	47.8	47.1	47.0	41.4	35.0	28.0	22.0	18.0		
9.0	42.1	42.1	42.7	42.8	39.6	34.0	26.9	22.0	18.0	14.0	
10.0	37.5	37.5	38.1	38.1	37.6	32.9	25.8	22.0	18.0	14.0	11.5
11.0			34.3	34.3	35.0	31.9	24.7	21.2	18.0	14.0	11.5
12.0			31.1	31.1	31.8	30.9	23.6	20.5	18.0	14.0	11.5
14.0			24.8	25.9	25.9	25.3	21.7	18.9	16.9	14.0	11.5
16.0				21.2	21.1	20.6	20.6	17.4	15.9	14.0	11.5
18.0				17.7	17.6	17.1	17.7	15.8	14.9	13.7	11.0
20.0					15.0	15.5	15.0	14.8	14.4	13.2	10.4
22.0					12.9	13.4	12.9	13.2	13.1	12.4	9.9
24.0						11.7	11.2	11.4	11.4	11.0	9.4
26.0						10.3	9.9	10.0	10.0	9.6	8.8
28.0						9.1	9.2	9.1	8.8	8.4	8.3
30.0							8.3	8.1	7.8	7.4	7.4
32.0							7.4	7.2	6.9	6.5	6.6
34.0								6.5	6.2	5.8	5.8
36.0								5.8	5.5	5.1	5.2
38.0									5.0	4.6	4.6
40.0									4.4	4.0	4.1
42.0										3.6	3.6
44.0										3.2	3.2
46.0										2.8	2.8
48.0											2.5

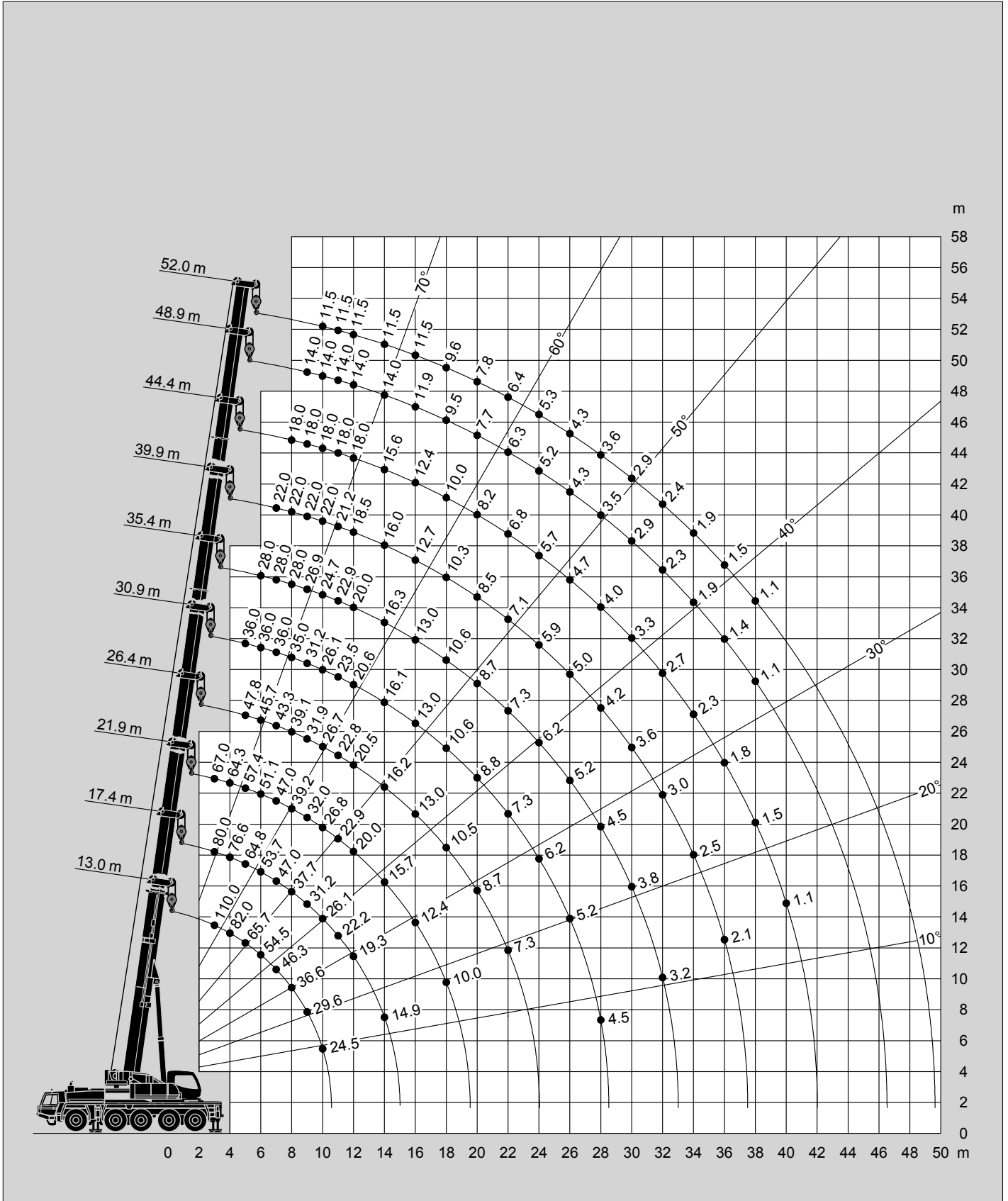
* Nach hinten / * Over rear / * A l'arrière / * Sobre la parte trasera

Hubhöhen
Lifting heights
Hauteurs de levage
Alturas de elevación




11t

DIN/ISO/EN



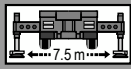
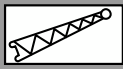
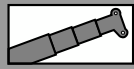
Tragfähigkeiten
Lifting capacities
Capacités de levage
Capacidades de elevación



 m	13.0 m*	13.0 m	17.4 m	21.9 m	26.4 m	30.9 m	35.4 m	39.9 m	44.4 m	48.9 m	52.0 m
3.0	110.0	95.0	80.0	67.0							
3.5	93.3	83.7	80.0	65.6							
4.0	82.0	77.1	76.6	64.3	50.0						
4.5	73.1	71.5	71.0	60.9	48.9						
5.0	65.7	65.7	64.8	57.4	47.8	36.0					
6.0	54.5	54.5	53.7	51.1	45.7	36.0	28.0				
7.0	46.3	46.3	47.0	47.0	43.3	36.0	28.0	22.0			
8.0	36.6	36.6	37.7	39.2	39.1	35.0	28.0	22.0	18.0		
9.0	29.6	29.6	31.2	32.0	31.9	31.2	26.9	22.0	18.0	14.0	
10.0	24.5	24.5	26.1	26.8	26.7	26.1	24.7	22.0	18.0	14.0	11.5
11.0			22.2	22.9	22.8	23.5	22.9	21.2	18.0	14.0	11.5
12.0			19.3	20.0	20.5	20.6	20.0	18.5	18.0	14.0	11.5
14.0			14.9	15.7	16.2	16.1	16.3	16.0	15.6	14.0	11.5
16.0				12.4	13.0	13.0	13.0	12.7	12.4	11.9	11.5
18.0				10.0	10.5	10.6	10.6	10.3	10.0	9.5	9.6
20.0					8.7	8.8	8.7	8.5	8.2	7.7	7.8
22.0					7.3	7.3	7.3	7.1	6.8	6.3	6.4
24.0						6.2	6.2	5.9	5.7	5.2	5.3
26.0						5.2	5.2	5.0	4.7	4.3	4.3
28.0						4.5	4.5	4.2	4.0	3.5	3.6
30.0							3.8	3.6	3.3	2.9	2.9
32.0							3.2	3.0	2.7	2.3	2.4
34.0								2.5	2.3	1.9	1.9
36.0								2.1	1.8	1.4	1.5
38.0									1.5	1.1	1.1
40.0									1.1		

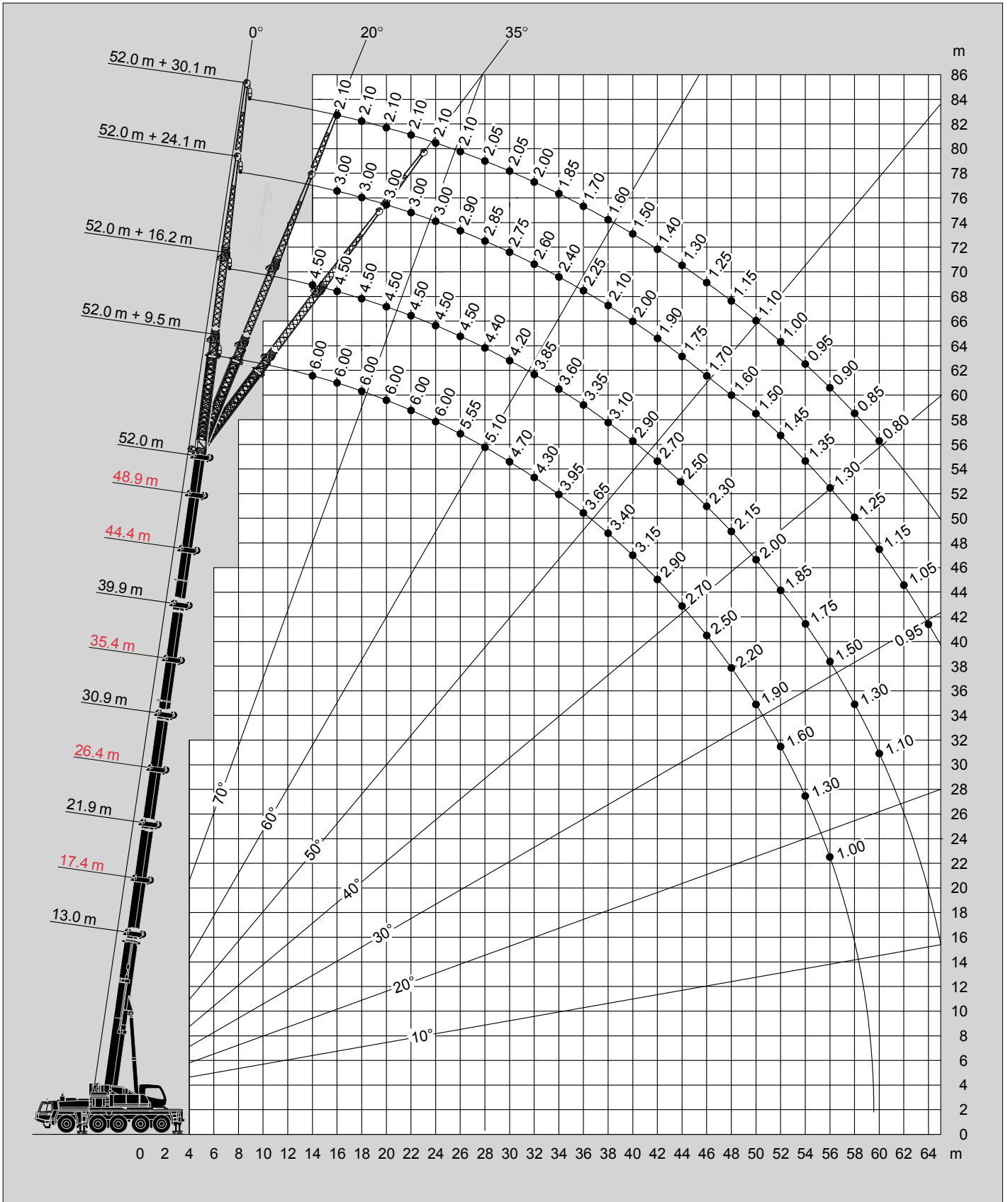
* Nach hinten / * Over rear / * A l'arrière / * Sobre la parte trasera

Hubhöhen
Lifting heights
Hauteurs de levage
Alturas de elevación

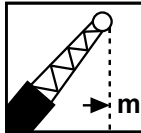


35t

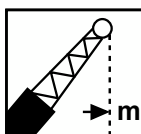
DIN/ISO/EN



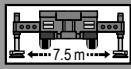
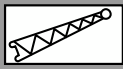
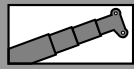


	52.0 m + 9.5 m			52.0 m + 16.2 m		
	0°	20°	35°	0°	20°	35°
10.0	6.00					
11.0	6.00					
12.0	6.00					
14.0	6.00	6.00		4.50		
16.0	6.00	6.00	5.40	4.50		
18.0	6.00	6.00	5.20	4.50	4.00	
20.0	6.00	6.00	5.00	4.50	4.00	
22.0	6.00	5.90	4.90	4.50	3.80	2.55
24.0	6.00	5.65	4.70	4.50	3.60	2.45
26.0	5.55	5.25	4.60	4.50	3.40	2.35
28.0	5.10	4.85	4.40	4.40	3.30	2.30
30.0	4.70	4.50	4.30	4.20	3.10	2.20
32.0	4.30	4.15	4.10	3.85	3.00	2.15
34.0	3.95	3.85	3.80	3.60	2.85	2.10
36.0	3.65	3.55	3.55	3.35	2.70	2.05
38.0	3.40	3.30	3.30	3.10	2.60	2.00
40.0	3.15	3.05	3.05	2.90	2.50	1.95
42.0	2.90	2.85	2.85	2.70	2.40	1.90
44.0	2.70	2.65	2.65	2.50	2.35	1.85
46.0	2.50	2.50	2.50	2.30	2.25	1.85
48.0	2.20	2.30	2.35	2.15	2.15	1.80
50.0	1.90	2.00	2.00	2.00	2.00	1.80
52.0	1.60	1.70	1.70	1.85	1.85	1.75
54.0	1.30	1.30	1.30	1.75	1.75	1.70
56.0	1.00	1.10	1.00	1.50	1.65	1.65
58.0				1.30	1.40	1.40
60.0				1.10	1.20	1.10
62.0						
64.0						



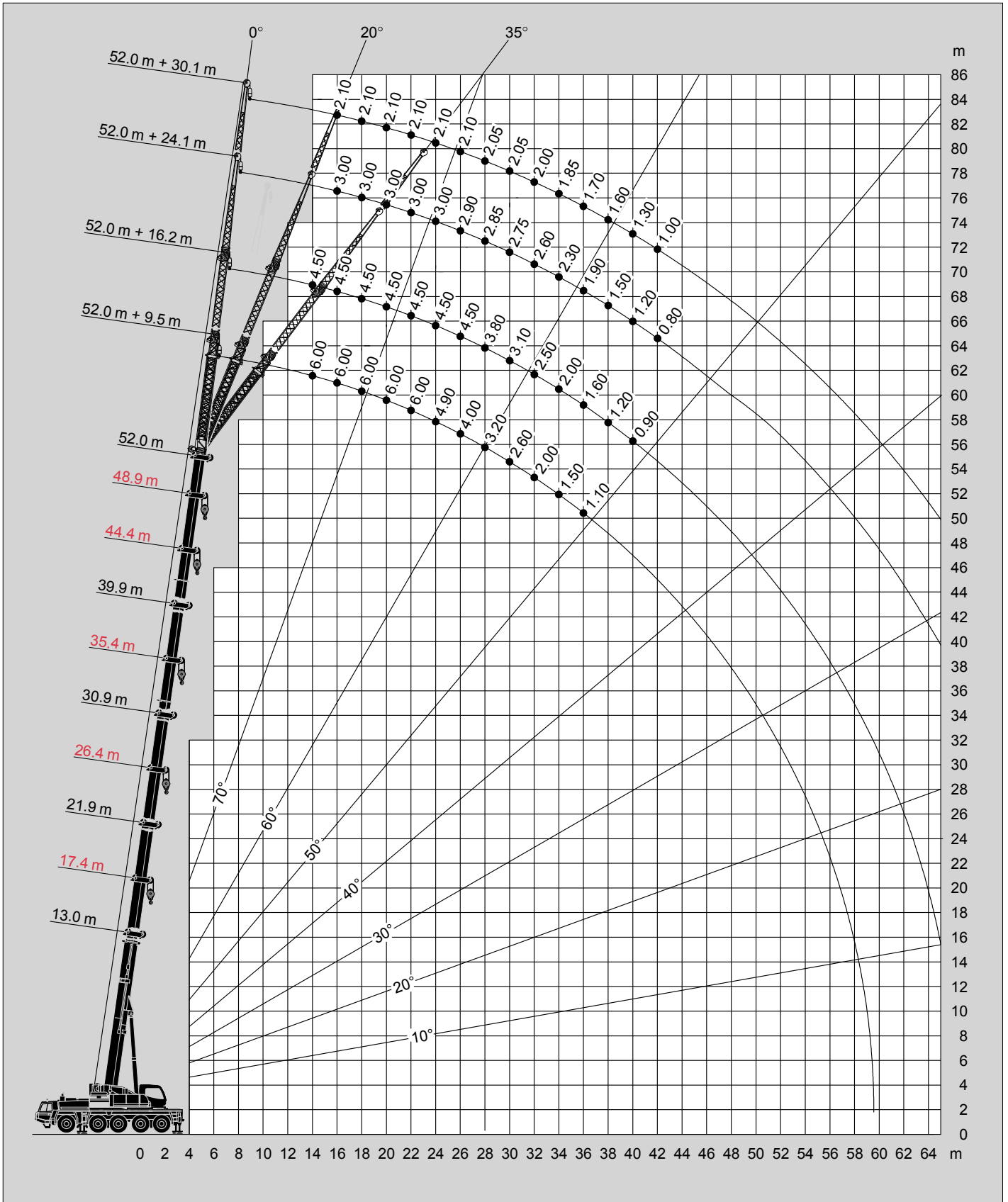
	48.9 m + 9.5 m			48.9 m + 16.2 m		
	0°	20°	35°	0°	20°	35°
10.0	7.00					
11.0	7.00					
12.0	7.00	7.00				
14.0	7.00	7.00		5.10		
16.0	7.00	6.80	5.30	5.10	4.50	
18.0	7.00	6.60	5.10	5.10	4.50	
20.0	7.00	6.40	4.90	5.10	4.40	3.00
22.0	7.00	6.20	4.80	5.10	4.20	2.90
24.0	6.60	5.90	4.60	5.10	4.00	2.80
26.0	6.25	5.60	4.50	5.00	3.80	2.70
28.0	5.90	5.30	4.40	4.80	3.60	2.60
30.0	5.60	5.10	4.30	4.70	3.40	2.55
32.0	5.35	4.90	4.20	4.40	3.30	2.45
34.0	5.10	4.70	4.10	4.10	3.10	2.40
36.0	4.85	4.50	4.00	3.90	3.00	2.35
38.0	4.40	4.30	3.90	3.70	2.90	2.30
40.0	3.90	4.10	3.80	3.50	2.75	2.25
42.0	3.40	3.60	3.70	3.30	2.65	2.20
44.0	3.00	3.10	3.20	3.10	2.55	2.15
46.0	2.60	2.70	2.80	3.00	2.50	2.15
48.0	2.20	2.30	2.30	2.70	2.40	2.10
50.0	1.90	2.00	2.00	2.40	2.35	2.10
52.0	1.60	1.60	1.60	2.10	2.30	2.05
54.0	1.30	1.30	1.20	1.90	2.00	2.00
56.0	1.10	1.00		1.60	1.70	1.70
58.0				1.40	1.40	1.40
60.0				1.10	1.10	1.00
62.0						

Hubhöhen
Lifting heights
Hauteurs de levage
Alturas de elevación

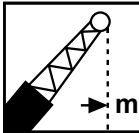


11t

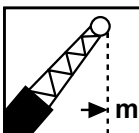
DIN/ISO/EN





 m	52.0 m + 9.5 m			52.0 m + 16.2 m		
	0°	20°	35°	0°	20°	35°
10.0	6.00					
11.0	6.00					
12.0	6.00					
14.0	6.00	6.00		4.50		
16.0	6.00	6.00	5.40	4.50		
18.0	6.00	6.00	5.20	4.50	4.00	
20.0	6.00	6.00	5.00	4.50	4.00	
22.0	6.00	5.90	4.90	4.50	3.80	2.55
24.0	4.90	5.50	4.70	4.50	3.60	2.45
26.0	4.00	4.50	4.60	4.50	3.40	2.35
28.0	3.20	3.70	4.00	3.80	3.30	2.30
30.0	2.60	2.90	3.20	3.10	3.10	2.20
32.0	2.00	2.30	2.60	2.50	3.00	2.15
34.0	1.50	1.80	2.00	2.00	2.60	2.10
36.0	1.10	1.30	1.50	1.60	2.10	2.05
38.0		0.90	1.10	1.20	1.70	2.00
40.0				0.90	1.30	1.60
42.0					0.90	1.20
44.0						0.80
46.0						
48.0						
50.0						



 m	48.9 m + 9.5 m			48.9 m + 16.2 m		
	0°	20°	35°	0°	20°	35°
10.0	7.00					
11.0	7.00					
12.0	7.00	7.00				
14.0	7.00	7.00		5.10		
16.0	7.00	6.80	5.30	5.10	4.50	
18.0	7.00	6.60	5.10	5.10	4.50	
20.0	7.00	6.40	4.90	5.10	4.40	3.00
22.0	6.10	6.20	4.80	5.10	4.20	2.90
24.0	5.00	5.50	4.60	5.10	4.00	2.80
26.0	4.00	4.50	4.50	4.60	3.80	2.70
28.0	3.30	3.70	4.00	3.80	3.60	2.60
30.0	2.60	3.00	3.20	3.20	3.40	2.55
32.0	2.00	2.40	2.60	2.60	3.10	2.45
34.0	1.50	1.80	2.00	2.10	2.60	2.40
36.0	1.10	1.40	1.50	1.70	2.10	2.35
38.0		1.00	1.10	1.30	1.70	2.00
40.0				0.90	1.30	1.60
42.0					1.00	1.20
44.0						0.90
46.0						
48.0						